

Hamptons

INTERNATIONAL



10947 Alexandra Ct, Inver Grove Heights, MN 55077

3  2 

£450,000

(\$594,900)

Property details



Key features

- Heating - Fuel Type: Gas
- Sewer: Public
- Garage Count: 3 Car Garage
- Fireplace Count: 2 Fireplaces
- Cooling: Central A/C
- Heating Type: Forced Air
- Water: City Water

Attributes

 Garage

10947 Alexandra Ct, Inver Grove Heights, MN 55077

£450,000

(\$594,900)

3  2 

Description

Discover this beautiful rambler in the high demand Southern Lakes neighborhood. This home has been meticulously maintained, features quality updates & has a an over-sized heated 3 car garage. Located at the end of a quite cul-de-sac with private wooded back yard & all living facilities are available on the main level. FEATURES & UPDATES INCLUDE: A large welcoming foyer, beautiful hardwood floors through the main level, an open floor plan with 9ft. ceilings. The center island kitchen features stunning Silestone counter-tops, a deep bowl sink with a high arch pullout faucet & a reverse osmosis drinking water system. The sunken living room features a gas fireplace with built-ins & lots of windows for natural light. The primary suite has plenty of room for king-size beds & the private primary bath has been nicely updated with a new ceramic surround walk-in shower, a whirlpool tub & dual vanity. The main hall bath is updated with a hexagonal tile tub & shower surround. A newer Andersen sliding glass door leads to your maintenance free deck overlooking your wooded back yard. The main floor laundry with front load Whirlpool Duet washer & dryer has the steam feature. The lower level provides large open spaces with a 2nd gas fireplace, a wall of built-ins, a wet bar with a Sub-Zero mini fridge, a versatile game room / office area & a 3rd ceramic bath. The garage is finished, insulated, heated & has an epoxy coated floor. This is a super clean move-in ready home that is sure to impress. Located in the 196 School District. All this & it includes a one home warranty.























































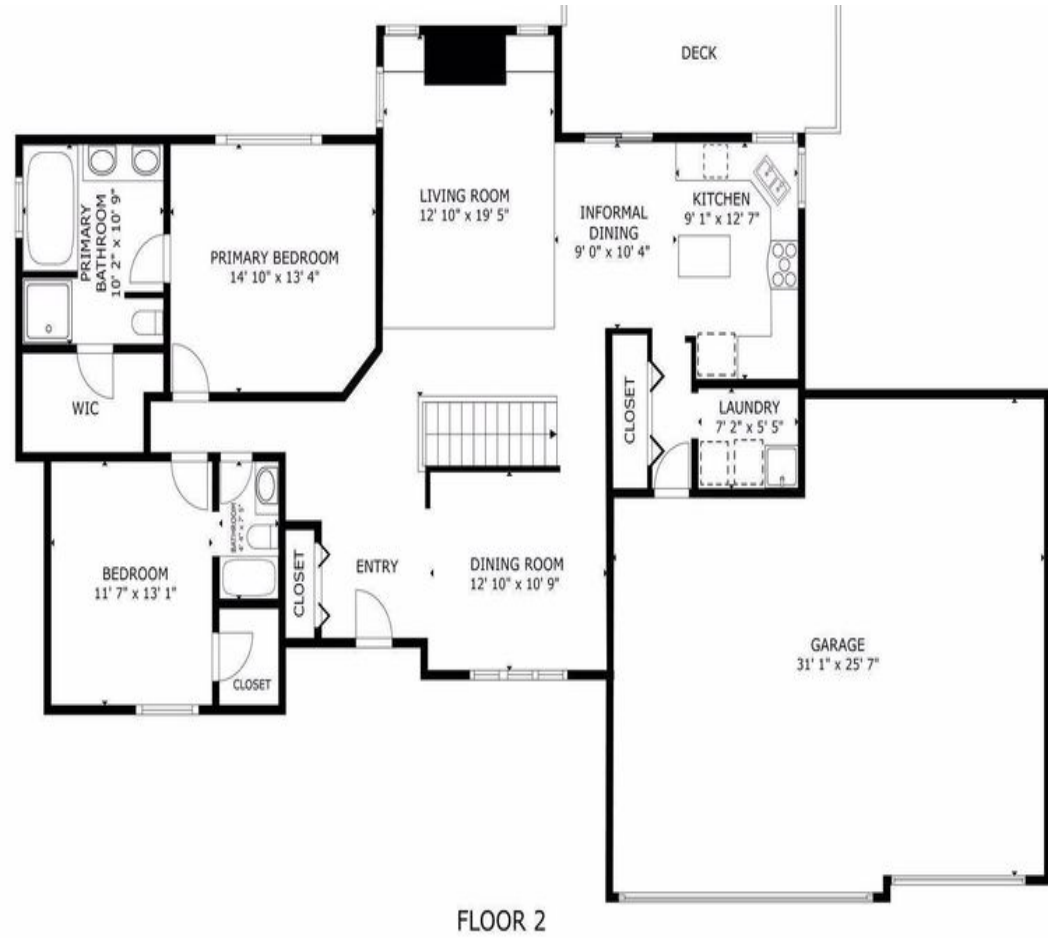














FLOOR 1

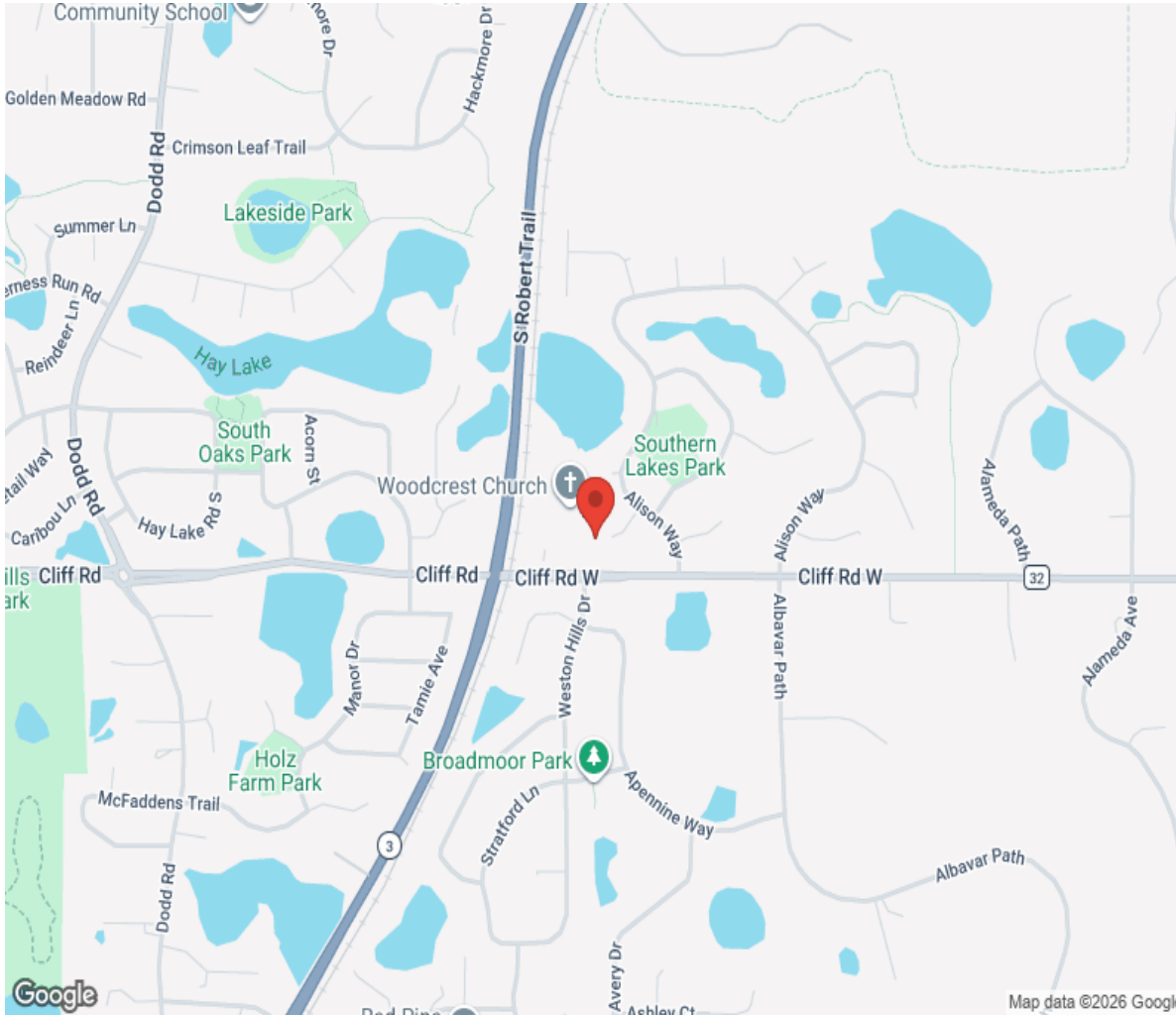
GROSS INTERNAL AREA
FLOOR 1 1,455 sq.ft. FLOOR 2 1,519 sq.ft.
EXCLUDED AREAS : GARAGE 739 sq.ft.
TOTAL : 2,975 sq.ft.

SIZES AND DIMENSIONS ARE APPROXIMATE, ACTUAL MAY VARY.





Location



Hamptons

INTERNATIONAL

+44 (0)20 8618 4551

international@hamptons.co.uk

www.hamptons-international.com