

# Hamptons

INTERNATIONAL



**76 Prospect Blvd, St Paul, MN 55107**

5 🏠 1 🚗

**£450,000**

**(\$599,000)**

## Property details

---



### Key features

- **Garage Count: 2 Car Garage**
- **Heating - Fuel Type: Gas**
- **Sewer: Public**
- **Cooling: Wall Unit A/C**
- **Water: City Water**

**76 Prospect Blvd, St Paul, MN 55107**

**£450,000**  
**(\$599,000)**

5 🏠 1 📄

## Description

Perched atop the bluffs directly above the Wabasha Street Caves of Saint Paul, this rare Arts & Crafts gem delivers something almost impossible to find: a sweeping cityscape view of downtown Saint Paul paired with the timeless character of early 20th-century craftsmanship. From the moment you step inside, the home announces itself with rich original woodwork - leaded glass windows, built-ins, and the warm, handcrafted millwork that only a century of love can produce. Five generous bedrooms offer space for sleeping, occasional guests, or the home office you've always wanted, and two easily accessible bathrooms balance vintage charm with everyday function. The new fully finished third floor is a true showpiece - whether you envision a sun-drenched primary suite, a studio, or a private retreat, the transformation is seamless and stunning, with the Saint Paul skyline as your permanent backdrop. Outside, a large, flat grassy lot gives you room to breathe in the heart of the city - a rare luxury on the bluff. Entertain on warm summer evenings as the lights of downtown begin to glow across the Mississippi valley below. Sit on the front porch and catch a perfect view of the fireworks after the baseball games at CHS stadium. Walk to Harriet Island for live music concerts and various city wide events. Take a short stroll to Prospect Park & Cherokee park then go grab tacos, ice cream and beverages all within a short walk from the home. This is Saint Paul history you can live in. Homes with this combination of character, setting, and views simply don't come available often.























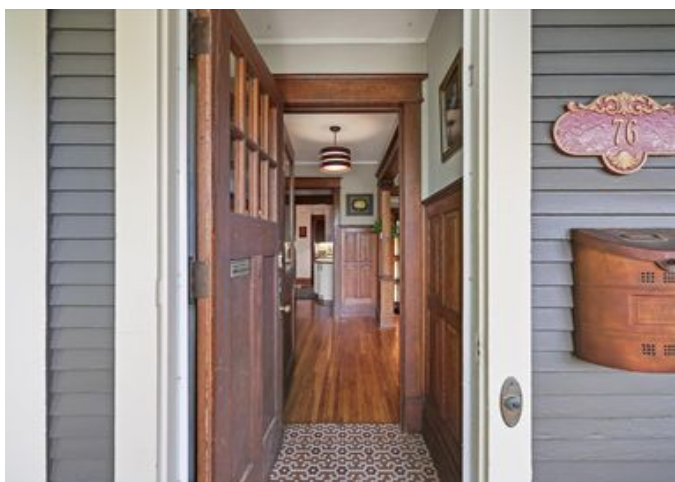
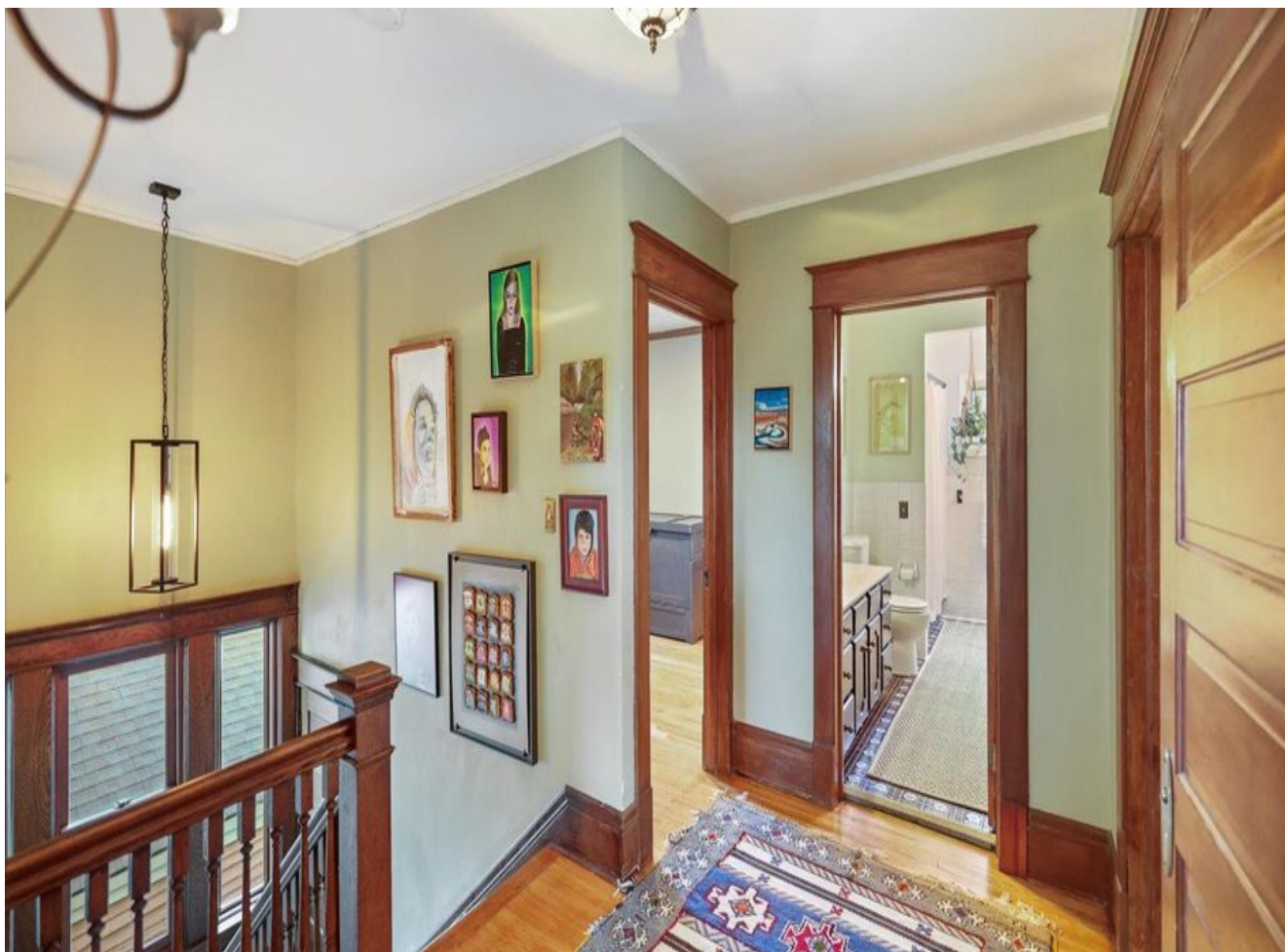
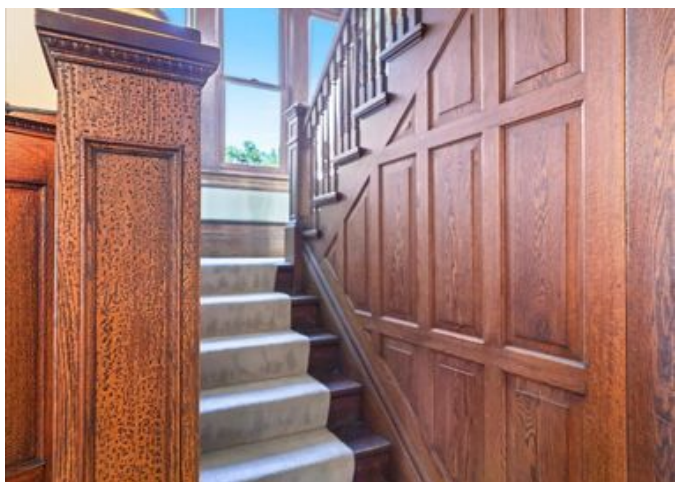
























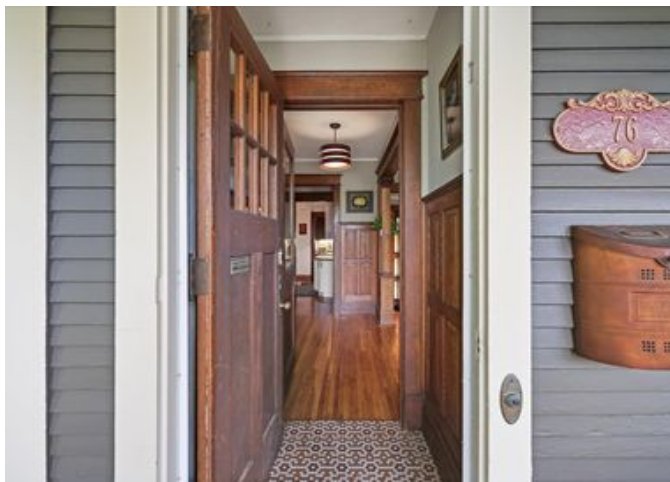




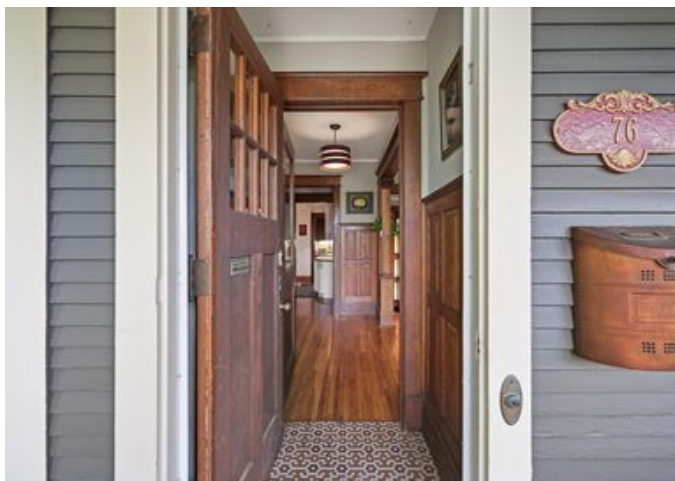








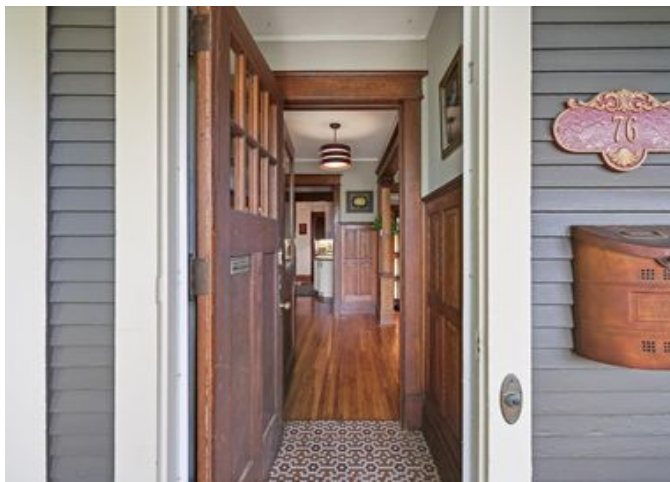




































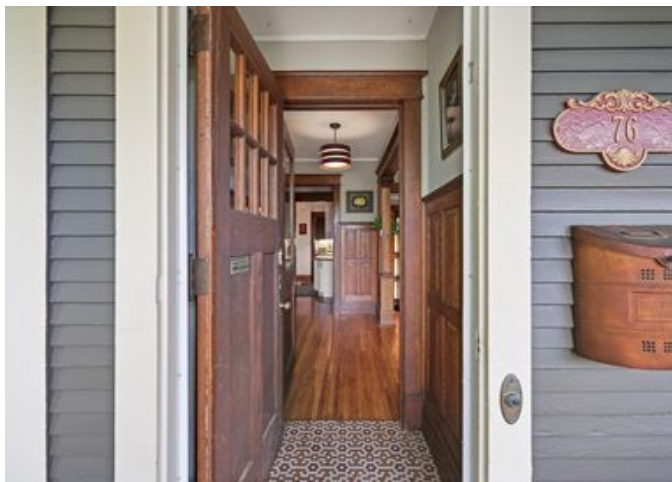




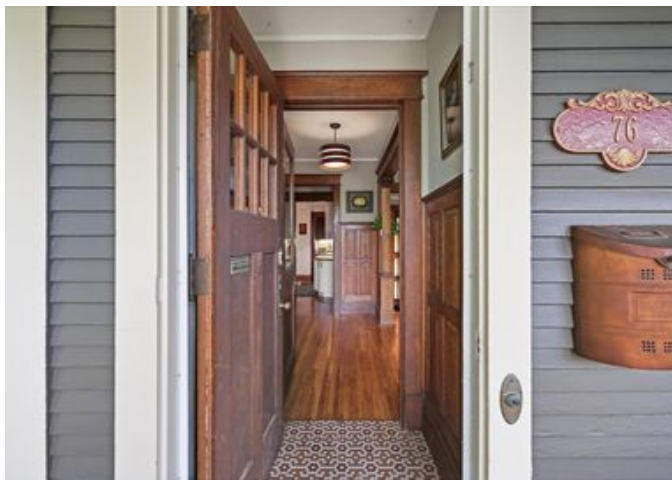














**TOTAL: 2637 sq. ft**

Basement: 319 sq. ft, 1st floor: 1012 sq. ft, 2nd floor: 881 sq. ft, 3rd floor: 425 sq. ft

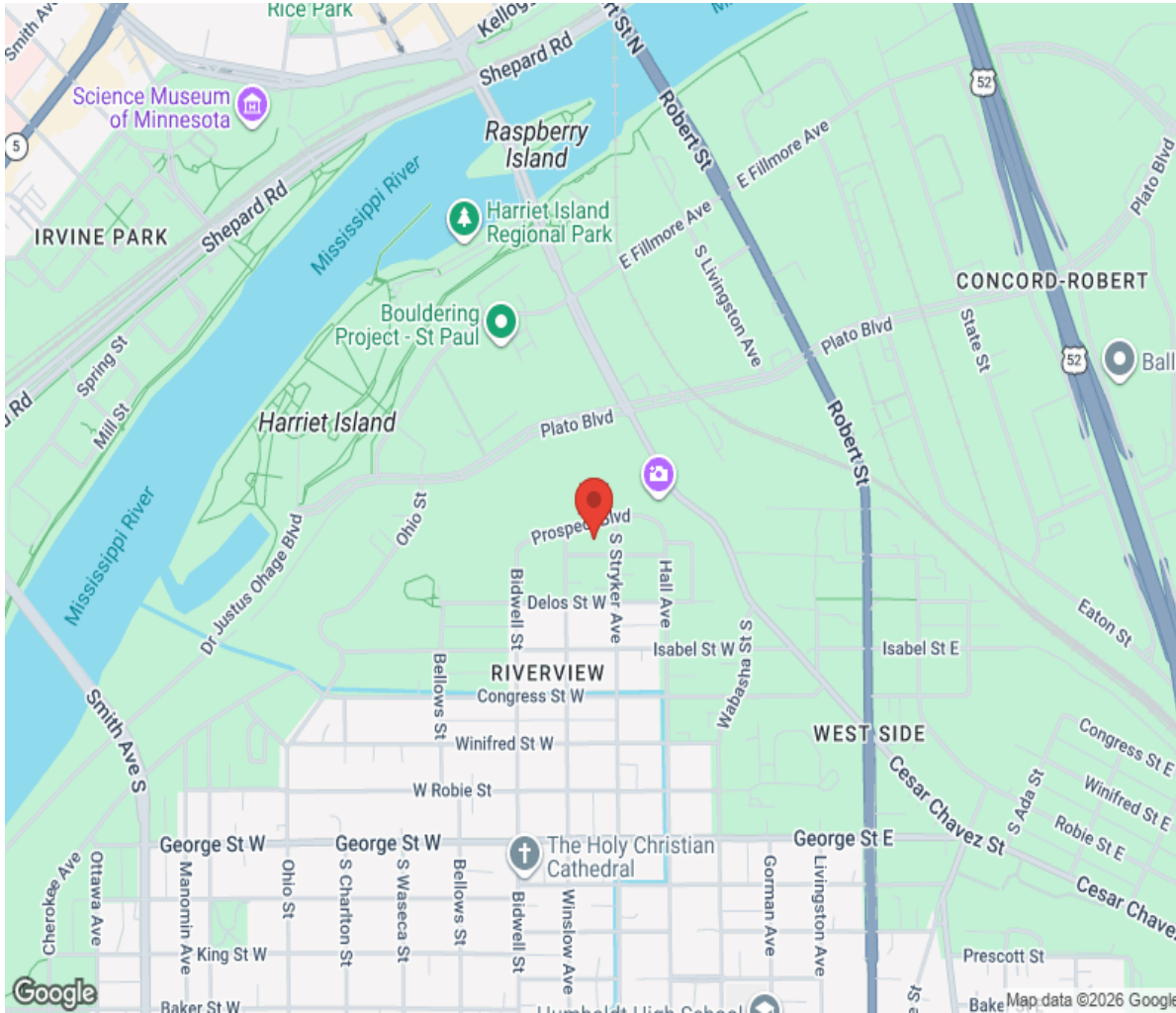
EXCLUDED AREAS: ROOM: 341 sq. ft, UTILITY: 199 sq. ft, UNDEFINED: 22 sq. ft,

PORCH: 166 sq. ft, DECK: 475 sq. ft, LOW CEILING: 343 sq. ft,

WALLS: 258 sq. ft

Floor Plan Created By Cubicasa App. Measurements Deemed Highly Reliable But Not Guaranteed.

# Location



**Hamptons**

INTERNATIONAL

**+44 (0)20 8618 4551**

**international@hamptons.co.uk**

**www.hamptons-international.com**