

Hamptons

INTERNATIONAL



1618 S Riverdale Dr, Appleton, WI 54914

4  3 

£240,000

(\$319,900)

Property details



Key features

- **Garage Count: 2 Car Garage**
- **Basement: Other Basement**
- **Age: Over 50 Years Old**

1618 S Riverdale Dr, Appleton, WI 54914

4 🏠 3 📄

£240,000
(\$319,900)

Description

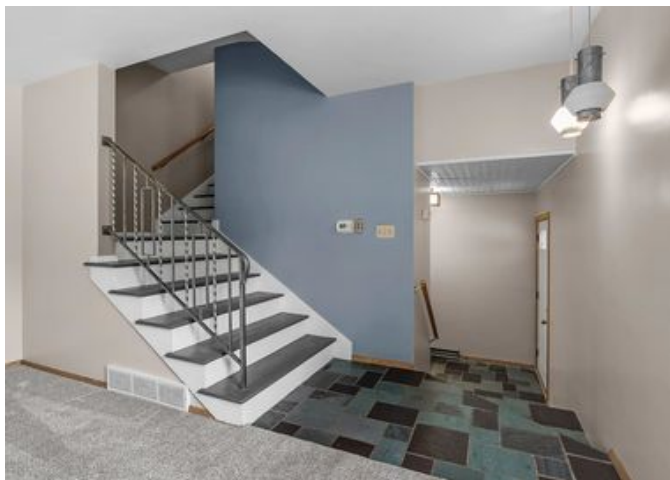
This attractive 2-story home is within walking distance of Xavier School. The main floor features a slate foyer, oversized front living room with newly installed carpet, formal dining room with patio doors leading to an aluminum deck, and a spacious kitchen overlooking the family room also with newly installed carpet. Most of the main floor has been freshly painted in a warm neutral color. A convenient first-floor laundry room and a versatile bedroom/office with built-in bookshelves, hardwood floors, and adjacent half bath complete the main level. Upstairs, all three bedrooms and the hallway feature hardwood floors. The hallway has built-ins, a linen closet, and a cedar closet. The primary suite includes a bathroom with a shower. Another full bath with a tub/shower complete the upstairs.



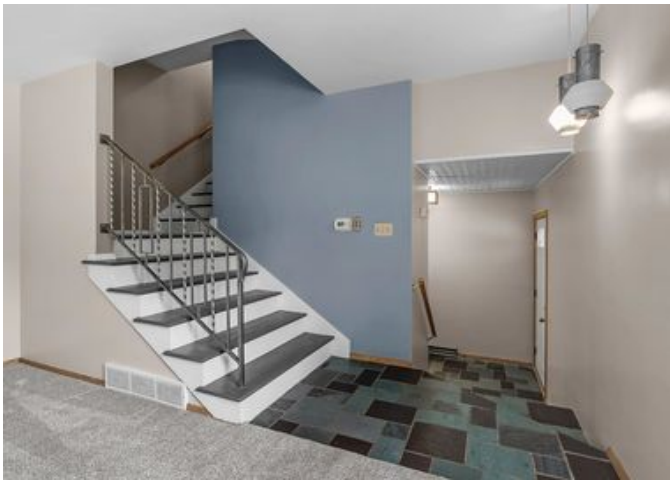




























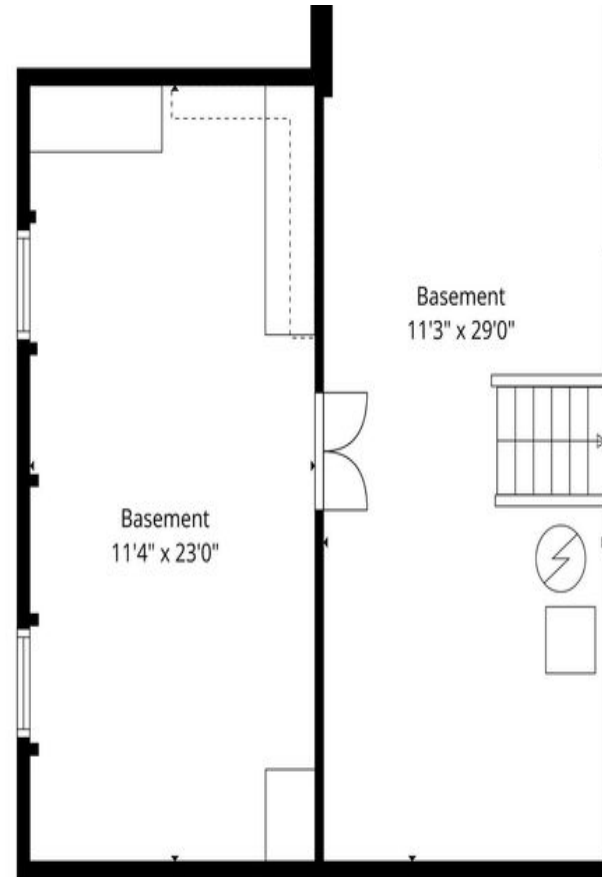
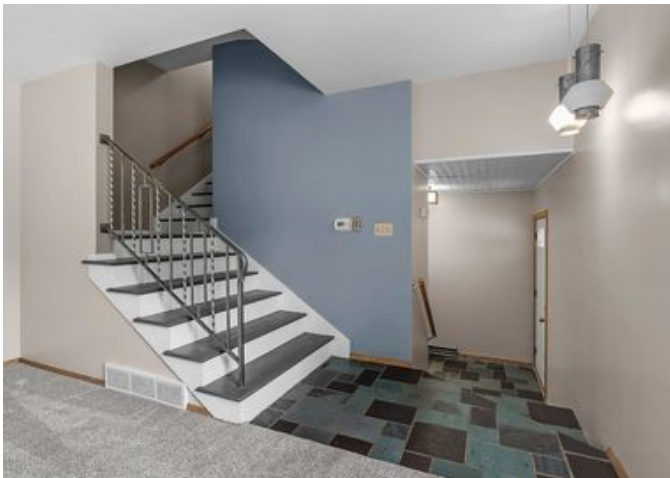


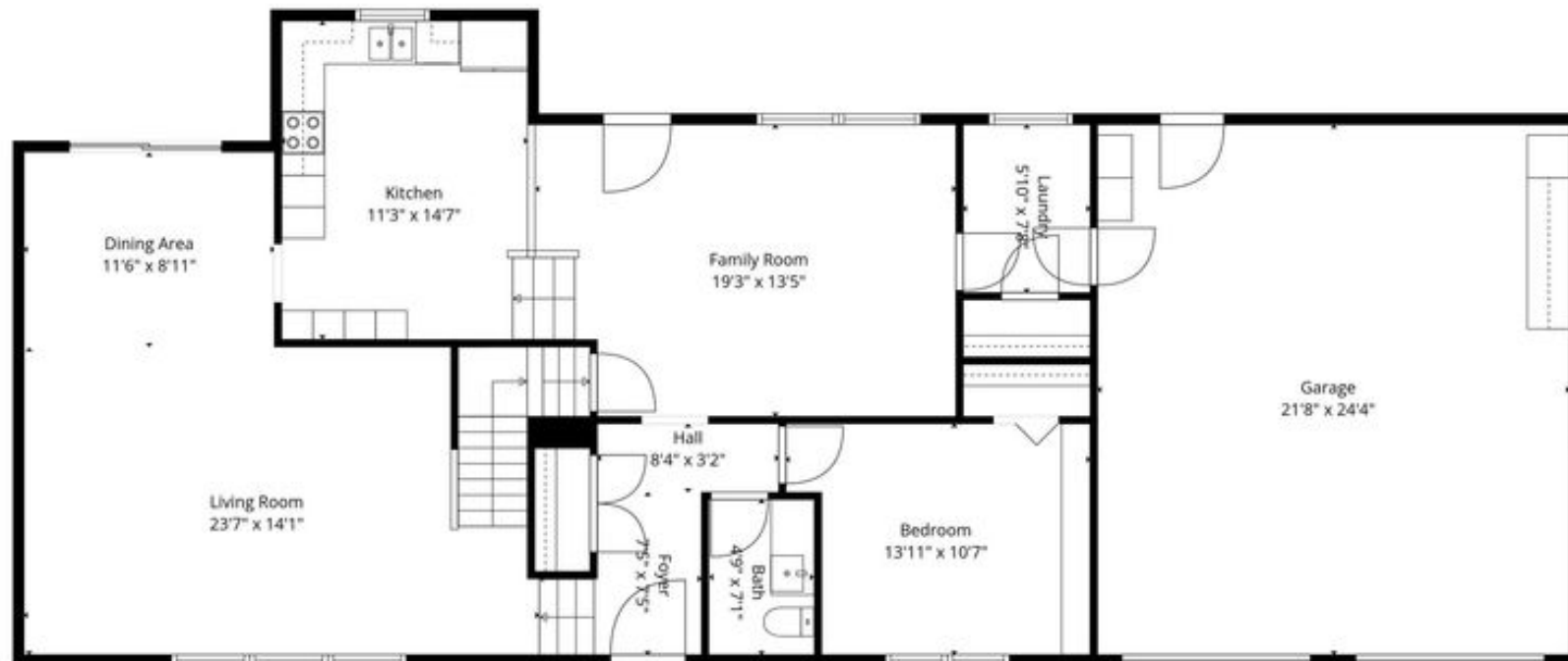










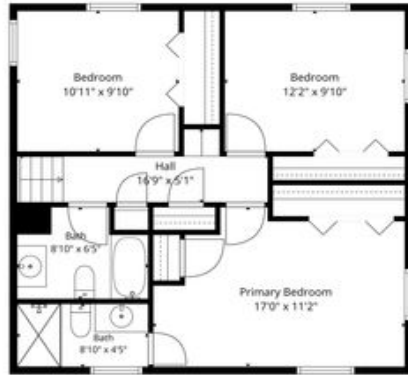


TOTAL: 1878 sq. ft

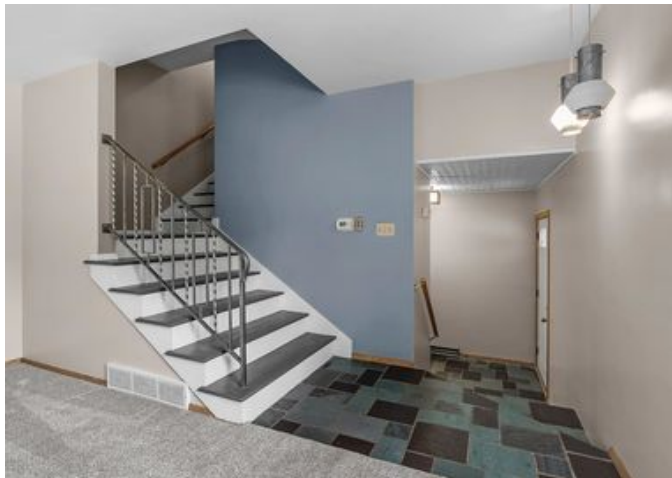
Basement: 0 sq. ft, 1st floor: 1227 sq. ft, 2nd floor: 651 sq. ft

EXCLUDED AREAS: BASEMENT: 594 sq. ft, GARAGE: 527 sq. ft, WALLS: 214 sq. ft

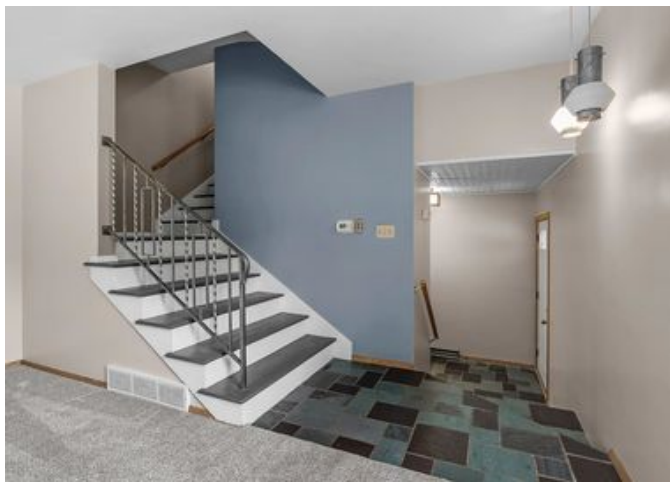
Floor Plan Created By Cubicasa App. Measurements Deemed Highly Reliable But Not Guaranteed.



TOTAL: 1878 sq. ft.
Basement: 0 sq. ft., 1st Floor: 1227 sq. ft., 2nd Floor: 651 sq. ft.
EXCLUDED AREAS: BASEMENT: 398 sq. ft., GARAGE: 527 sq. ft., PORCHES: 218 sq. ft.









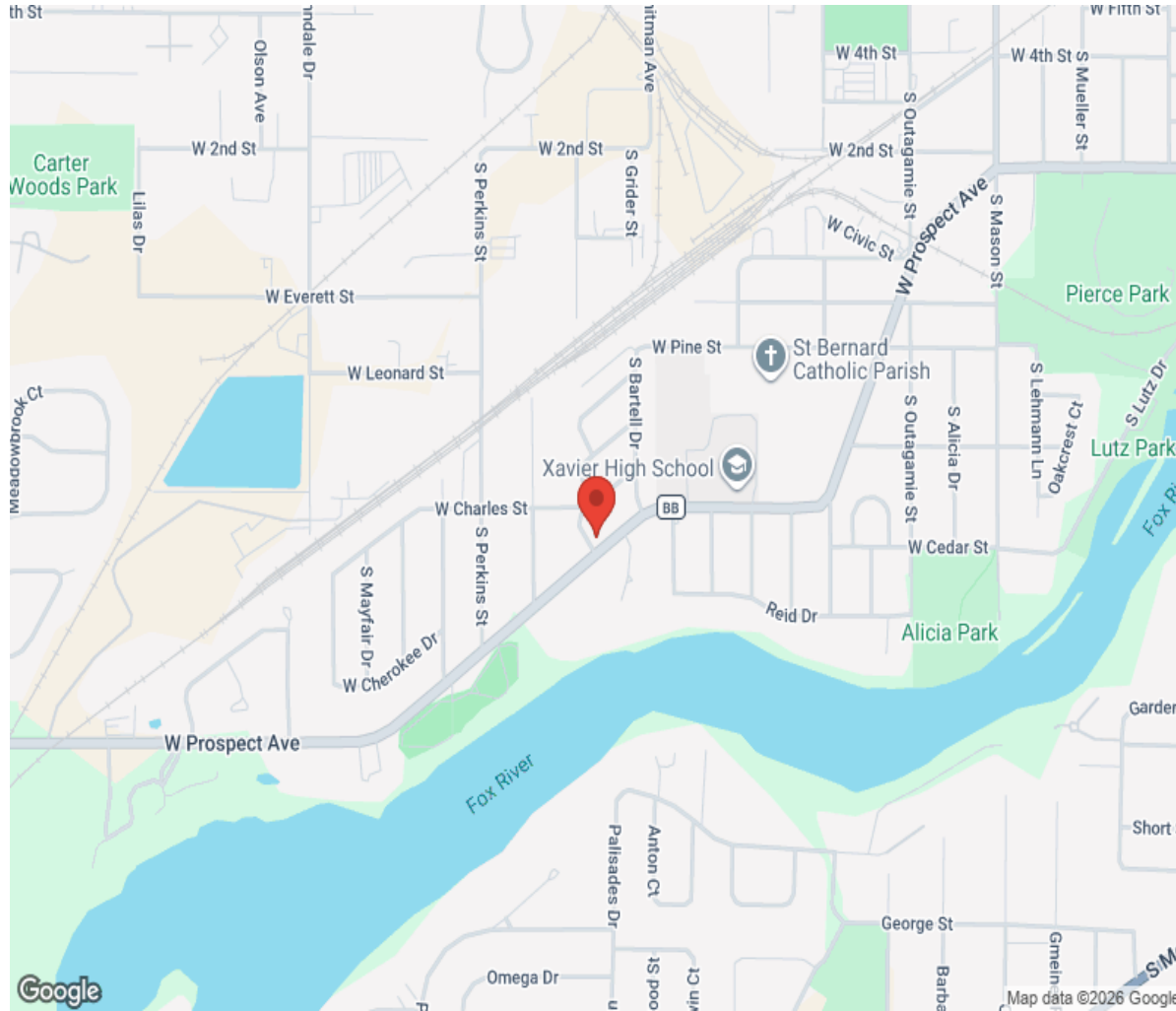








Location



Hamptons

INTERNATIONAL

+44 (0)20 8618 4551

international@hamptons.co.uk

www.hamptons-international.com