

Hamptons

INTERNATIONAL



Castle View Farm

8  4  6 

£2,000,000

(£1,995,000)




Property details



Key features

- Traditional Jersey Farmhouse with 4 bedrooms
- Versatile accommodation
- Over 4,800 square feet
- Would benefit from gentle modernisation
- South facing garden and swimming pool
- Plenty of parking
- Surrounded by fields
- Includes barn perfect for development
- Sole agent
- WhatsApp Don 07829 917172 or An

Attributes

-  Swimming pool
-  Private parking
-  Garden

Castle View Farm

8  4  6 

£2,000,000
(£1,995,000)

Description

A spacious granite property on three levels with barn, swimming pool, field and separate cottage. An expansive traditional granite farmhouse on three levels together with a separate one-bedroom cottage situated in rural Trinity. Offering both flexibility and longevity, this property is a perfect choice for families seeking a home that can grow with them. Presented in good condition throughout, it serves as an ideal, solid foundation for those looking to add their own style through incremental, cosmetic modernization.

Main Residence & Cottage The main farmhouse features entrance hall, living room, sitting room, dining room, kitchen, utility and large pantry on the ground floor. Six bedrooms and two bathrooms occupy the first floor and a main bedroom suite and additional sitting room/playroom sit on the top floor. The detached cottage provides a further living room, kitchen, conservatory, bedroom and a bathroom.

Development & Land The holding includes an agricultural field, grass field, garden with swimming pool, and ample parking area. A substantial barn offers significant scope for conversion into additional living space subject to obtaining the necessary planning permissions.

Education The house is in the catchment area for Grouville primary and Grainville secondary schools.

Contact WhatsApp Don on 07829 917172 or Andrew on 07797 814422





























































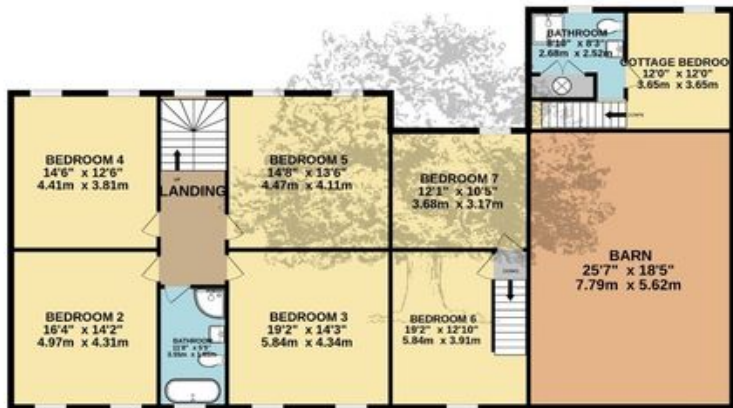




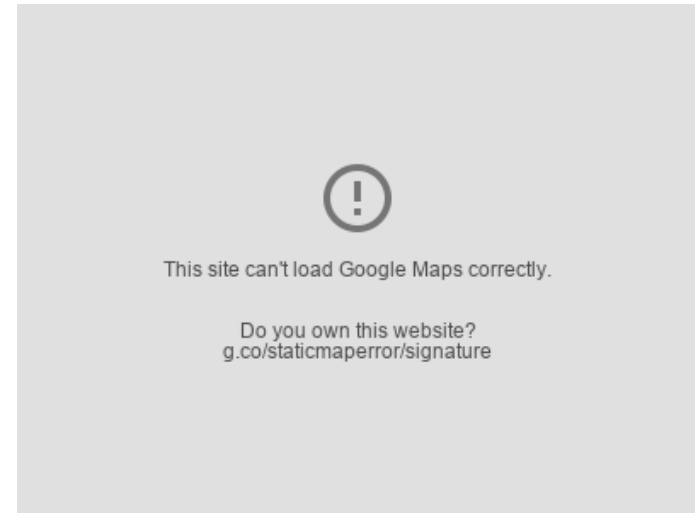
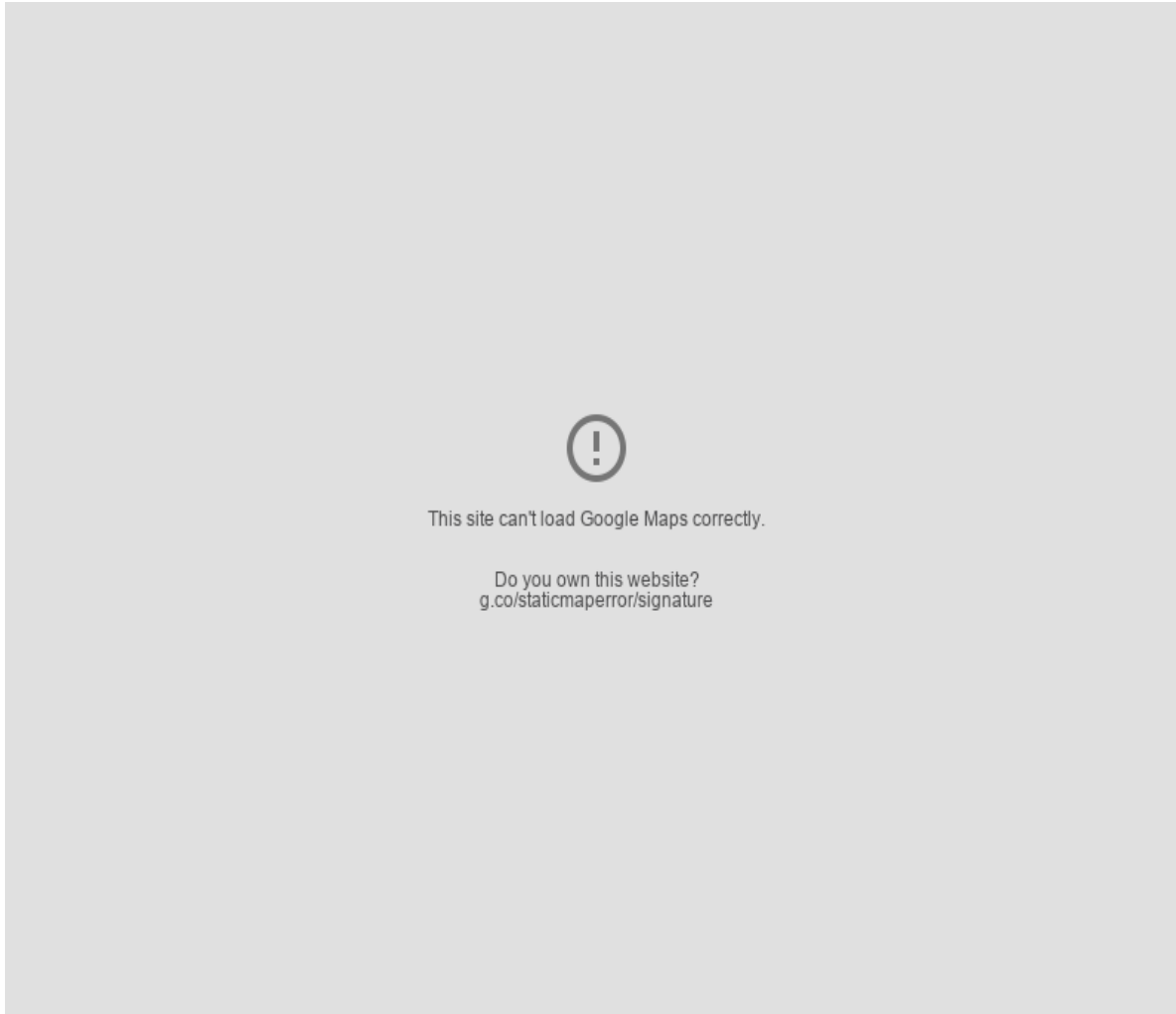


Floor plan

1ST FLOOR
1992 sq.ft. (185.0 sq.m.) approx.



Location



Hamptons

INTERNATIONAL

+44 (0)20 8618 4551

international@hamptons.co.uk

www.hamptons-international.com