

Hamptons

INTERNATIONAL



Finchley Road, London, NW3

4  2  1 

GUIDE PRICE

£1,250,000

(£1,250,000)

Property details



Key features

- **First Floor Apartment**
- **Four Bedrooms**
- **High Ceilings**
- **Period Building**
- **Bright Interiors**
- **Excellent Layout**
- **Off-Street Parking**
- **Two Bathrooms**
- **1495 Sq Ft**
- **Prime Location**

Attributes

- **Apartment**

Finchley Road, London, NW3

GUIDE PRICE

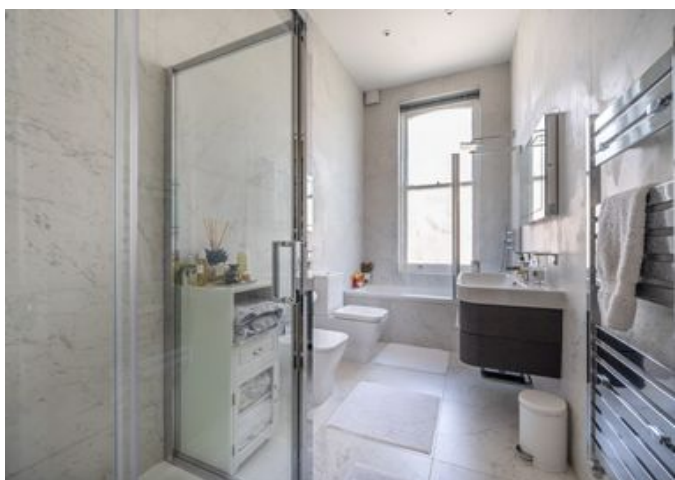
£1,250,000

(£1,250,000)

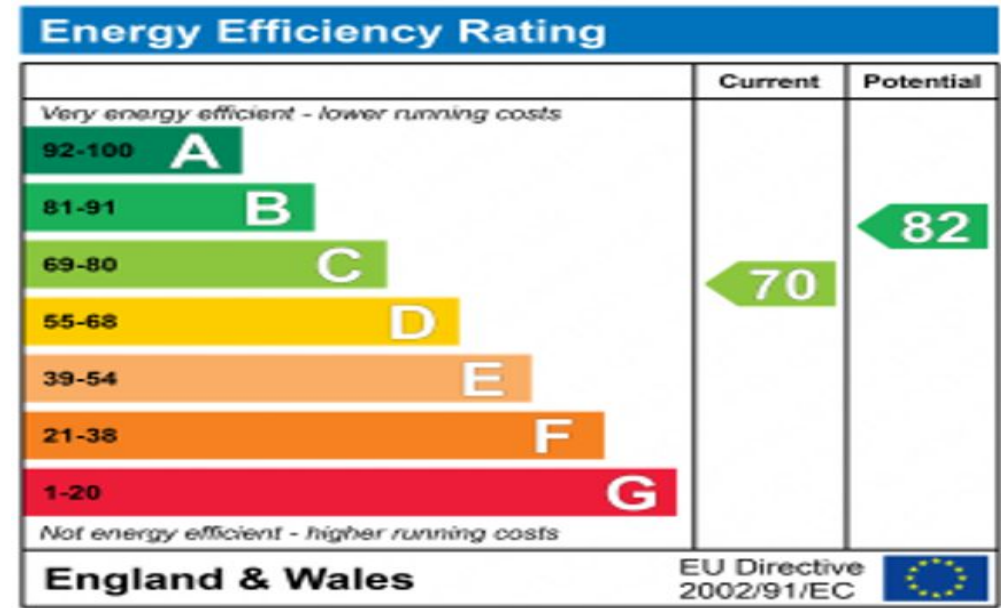
4 🏠 2 🚗 1 📄

Description

A beautifully proportioned four bedroom apartment occupying the first floor of an impressive period offering circa 1,500 sq ft of bright and exceptionally well-balanced accommodation together with off-street parking. The property benefits from fantastic ceiling heights, large windows and an incredibly practical layout which creates a genuine sense of space rarely found within apartments of this nature. The reception room offers excellent proportions for both entertaining and day-to-day living, the separate kitchen is fully fitted with ample storage and workspace. The bedroom accommodation is equally impressive, with four well-sized bedrooms positioned across the apartment, making it an ideal long-term family home or lateral downsizing opportunity alike. The apartment also retains a real sense of character and charm throughout, balanced perfectly with a clean and well-maintained finish, allowing an incoming purchaser the ability to move straight in whilst still offering scope to personalise over time if desired. Further benefits include two bathrooms, an impressive entrance hall, excellent built-in storage and the significant advantage of an off-street parking space. Situation Finchley Road is exceptionally well positioned for the extensive amenities, cafés, restaurants and transport connections of Hampstead, West Hampstead and Swiss Cottage, together with excellent access into both the City and West End. The property is also conveniently located for a number of highly regarded local schools and the open green spaces of Hampstead Heath. Property Ref Number: HAM-65382







Floor plan

FINCHLEY ROAD

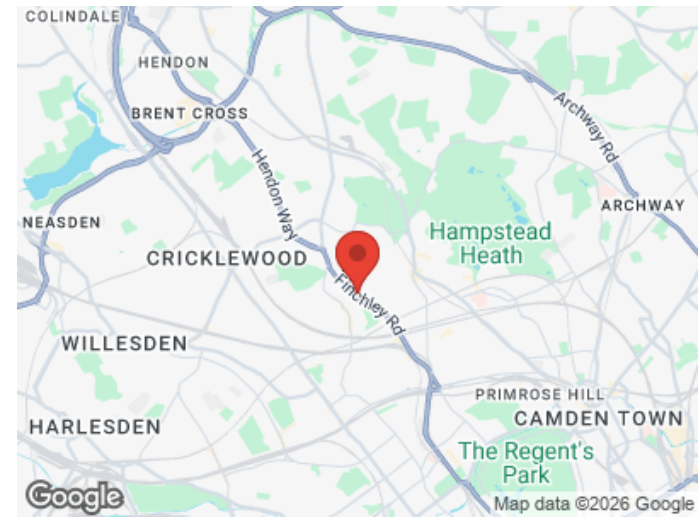
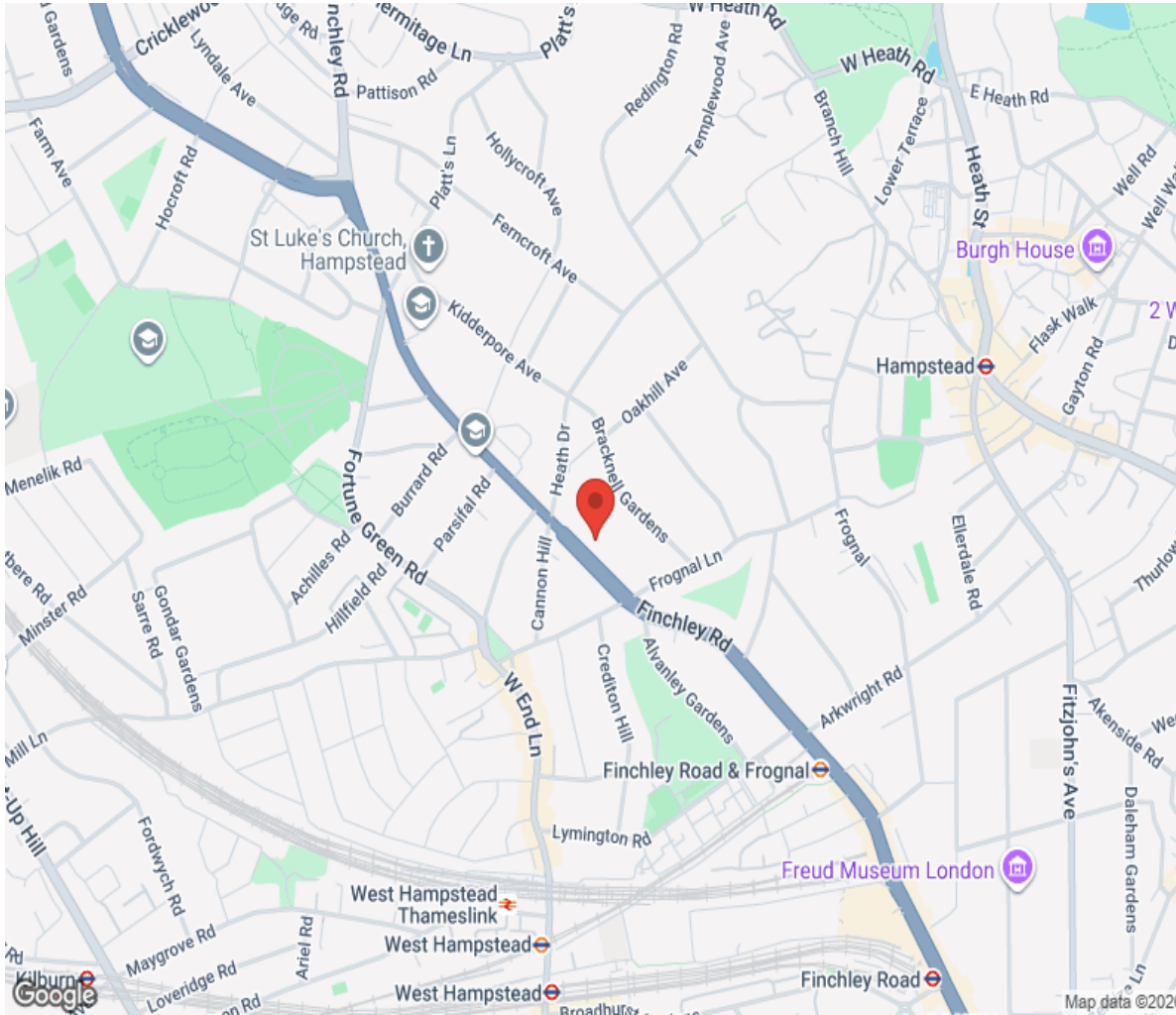
Approximate Gross Internal Area = 1495 sq. ft. (138.9 sq. m.)



First Floor

Drawn for illustration and identification purposes only.

Location



Hamptons

INTERNATIONAL

+44 (0)20 8618 4551

international@hamptons.co.uk

www.hamptons-international.com