

Hamptons

INTERNATIONAL



1825 Summit Ave, Saint Paul, MN 55105

4 🏠 3 🛏

£630,000

(\$825,000)

Property details



Key features

- **Garage Count: 2 Car Garage**
- **Heating - Fuel Type: Gas**
- **Sewer: Public**
- **Fireplace Count: 1 Fireplace**
- **Cooling: Central A/C**
- **Special Program: Global Luxury**
- **Water: City Water**

Attributes

 **Garden**

1825 Summit Ave, Saint Paul, MN 55105

£630,000
(\$825,000)

4  3 

Description

Located on historic Summit Avenue, this distinguished 1911 Prairie/Craftsman-inspired home showcases the architectural grandeur, exceptional craftsmanship, and timeless character that make Saint Paul's historic homes so coveted. Beautiful curb appeal begins w/professionally landscaped grounds on a double lot, open and enclosed front porches, and a recently painted exterior. Inside, rich natural woodwork, a tile entry, hardwood floors, coffered ceilings, leaded-glass windows, and remarkable period details have been lovingly preserved by the same owner for the last 22 years. The sun-filled LR w/fireplace and spacious DR w/gorgeous built-in buffet create elegant spaces for quiet evenings and entertaining. Custom built-in bookcases and professionally updated lighting both honor the architecture and enhance the atmosphere. Curl up with a good book in the charming open parlor. The kitchen features custom cabinetry, granite countertops, center island, and mudroom. A main-floor half bath adds convenience for guests. Outdoors, enjoy a private fully fenced backyard w/inviting patio and beautiful gardens. Upstairs offers 4 bedrooms on one level (one w deck), hardwood floors, and a partial ensuite dual-access full bath. Additional features include a newer boiler, roof 2024, central AC, unfinished walk-up attic, backyard shed, and leaf filter gutter covers. The LL has half bath, partially finished family rm w bar, wine cellar, laundry, and storage. Enjoy walks along Summit Ave, and boutique shopping and dining on Grand.











































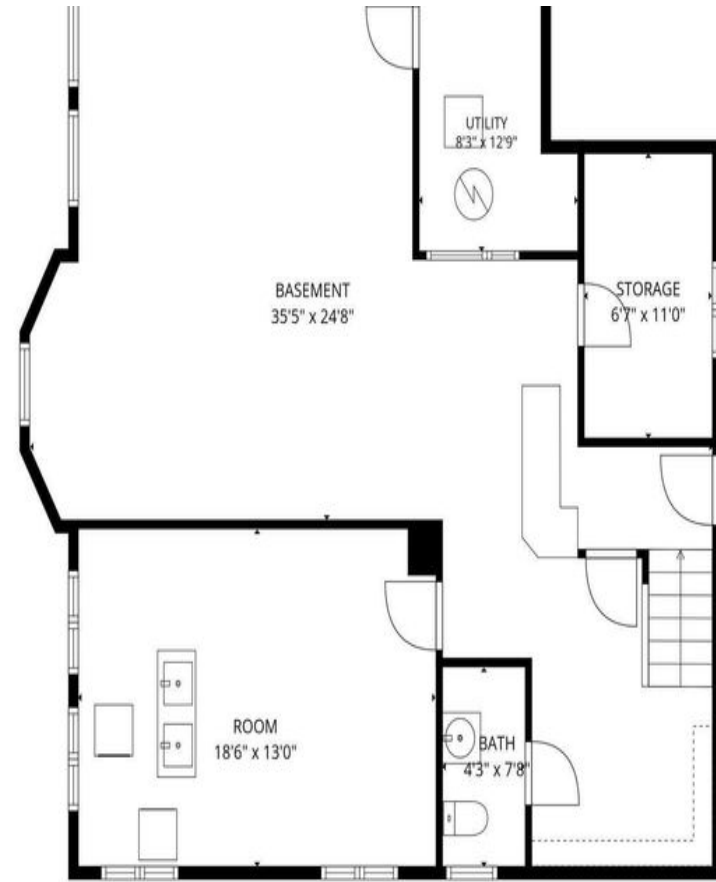




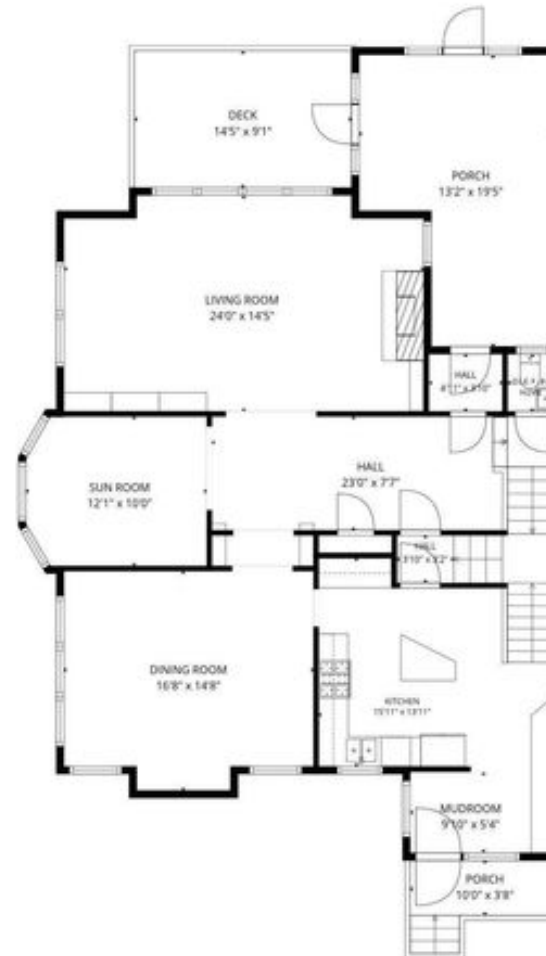








TOTAL: 2610 sq. ft

**TOTAL: 2610 sq. ft**

Basement: 40 sq. ft, 1st floor: 1447 sq. ft, 2nd floor: 1123 sq. ft, 3rd floor: 0 sq. ft

EXCLUDED AREAS: ROOM: 250 sq. ft, STORAGE: 79 sq. ft, UTILITY: 95 sq. ft,

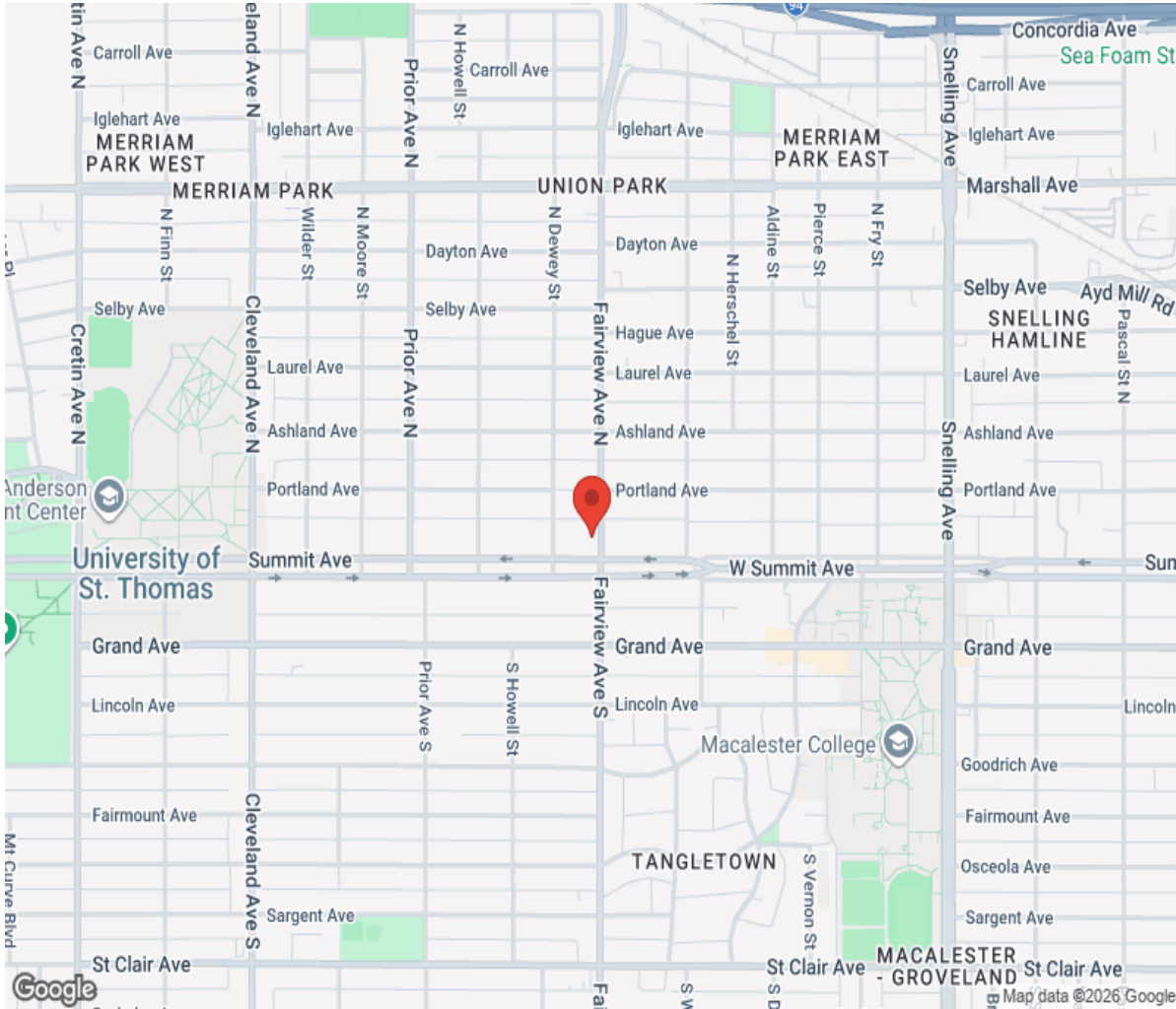
BASEMENT: 699 sq. ft, PORCH: 45 sq. ft, DECK: 133 sq. ft,

LOW CEILING: 175 sq. ft, UNDEFINED: 39 sq. ft, ATTIC: 741 sq. ft,

WALLS: 314 sq. ft

SIZES AND DIMENSIONS ARE APPROXIMATE, ACTUAL MAY VARY.

Location



Hamptons

INTERNATIONAL

+44 (0)20 8618 4551

international@hamptons.co.uk

www.hamptons-international.com