

Hamptons

INTERNATIONAL



1029 Bear Hollow Rd, Pineville, MO 64856

2 1/2 1 1/2

£1,890,000

(\$2,498,888)

Property details



Key features

- **Heating - Fuel Type: Propane**
- **Lot Description: Level**
- **Age: Over 50 Years Old**
- **Lot Description: Open**
- **Fireplace Description: Wood Burnin**
- **Fireplace Count: 1 Fireplace**
- **Sewer: Septic**
- **Water: Well**
- **Exterior Living Space: Porch**
- **Lot Description: Wooded**

Attributes

 **With land**

1029 Bear Hollow Rd, Pineville, MO 64856

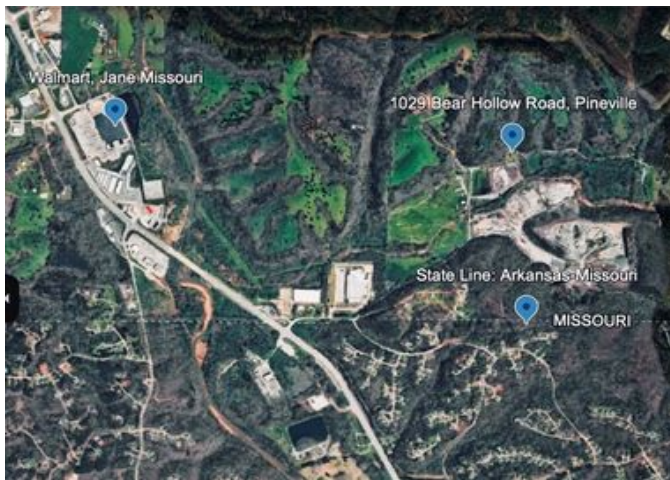
£1,890,000

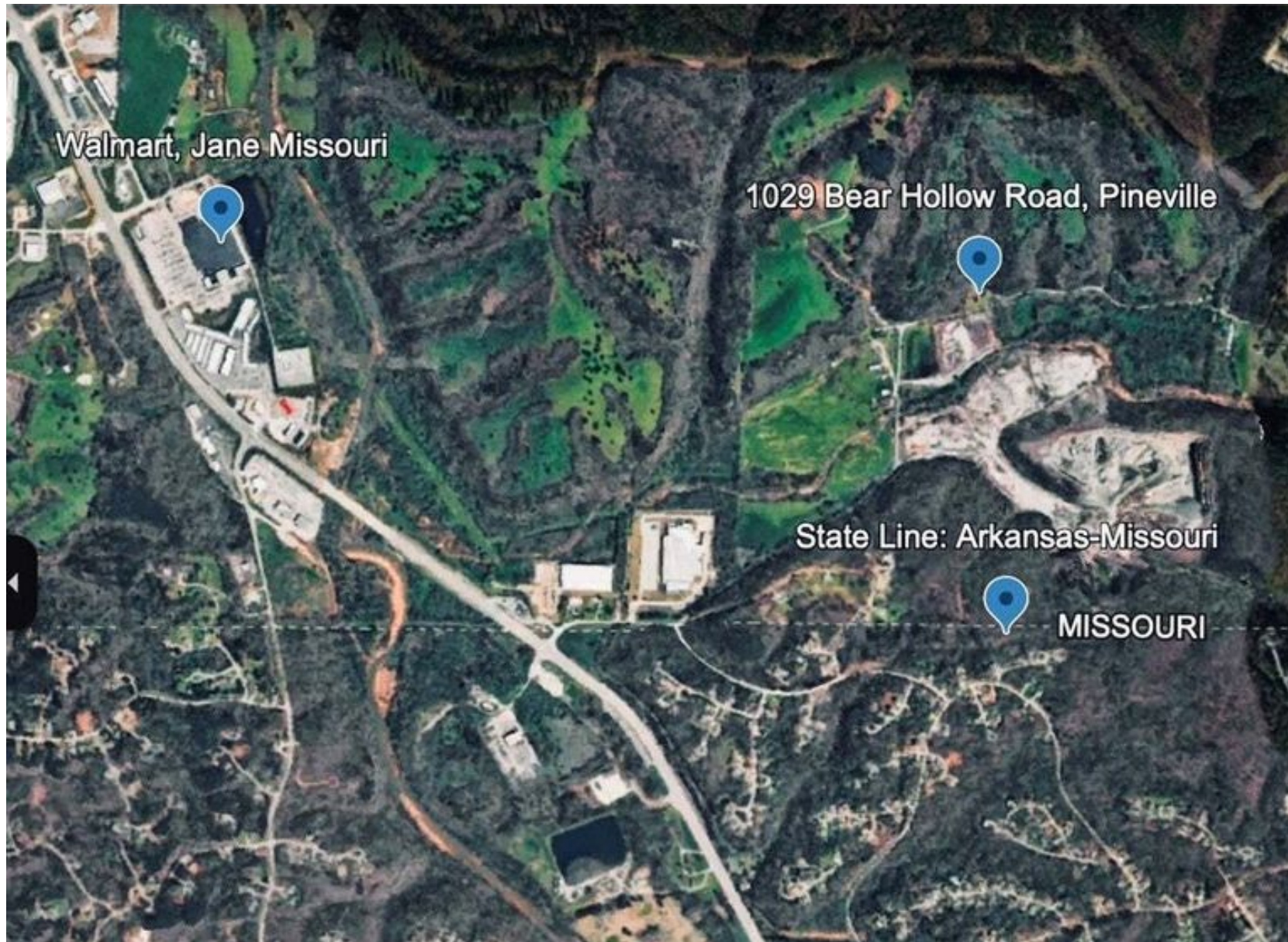
(\$2,498,888)

2 🏠 1 📄

Description

Experience the beauty, privacy, and potential of the Ozarks! 147 Acres with Development Potential sits right at the Arkansas-Missouri State Line! Discover an exceptional opportunity with 147 acres of scenic countryside offering endless possibilities for development, recreation, farming, or a private estate. Ideally located near the Arkansas-Missouri state line, this property combines convenience, natural beauty, and investment potential. The property features a charming farmhouse, established utilities including well water, rural water access, and electricity, making it ready for immediate use. 3 outbuildings provide ample storage, workshop space, or agricultural use. Nature enthusiasts will appreciate the abundant wildlife, mature timber, breathtaking panoramic views throughout the property. Enjoy the peace and privacy of country living while remaining just minutes from the Walmart in Jane, providing easy access to shopping and conveniences. Also just minutes from Back 40 Bike Trails.







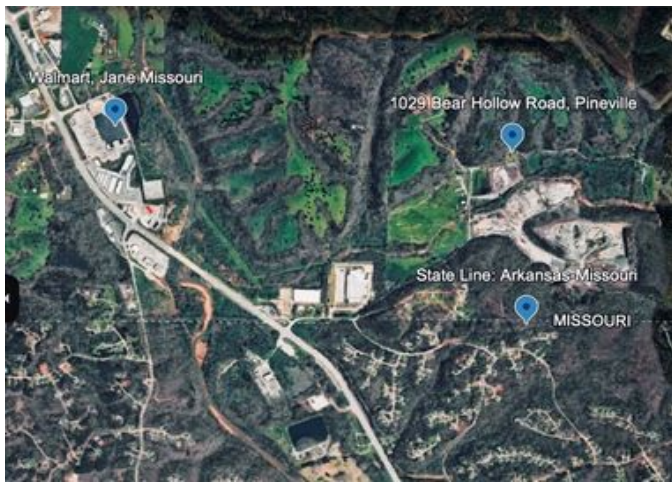
















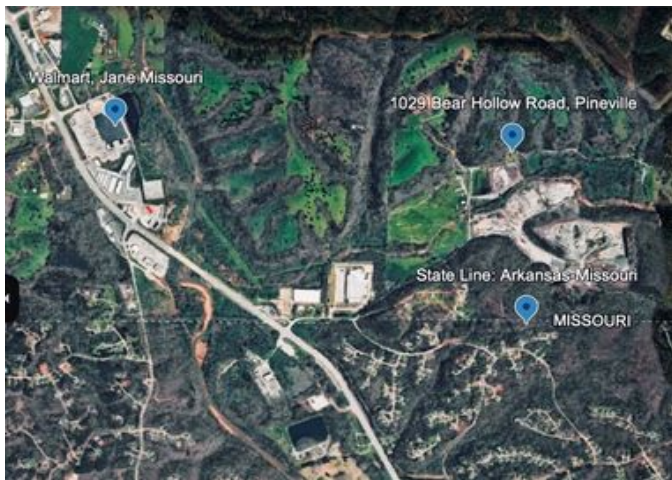














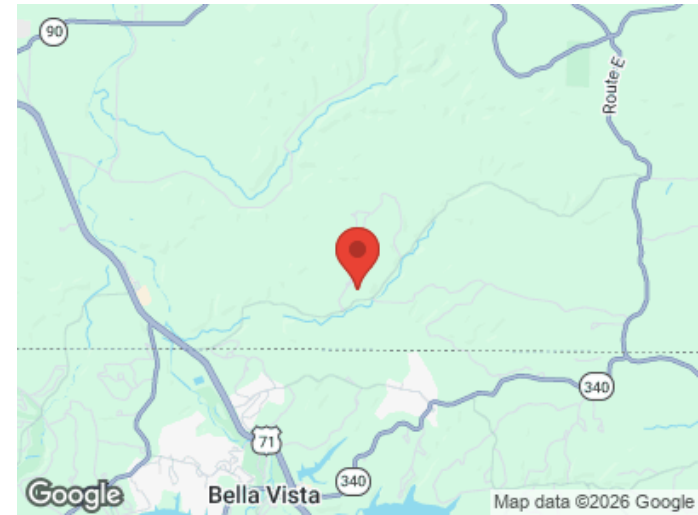
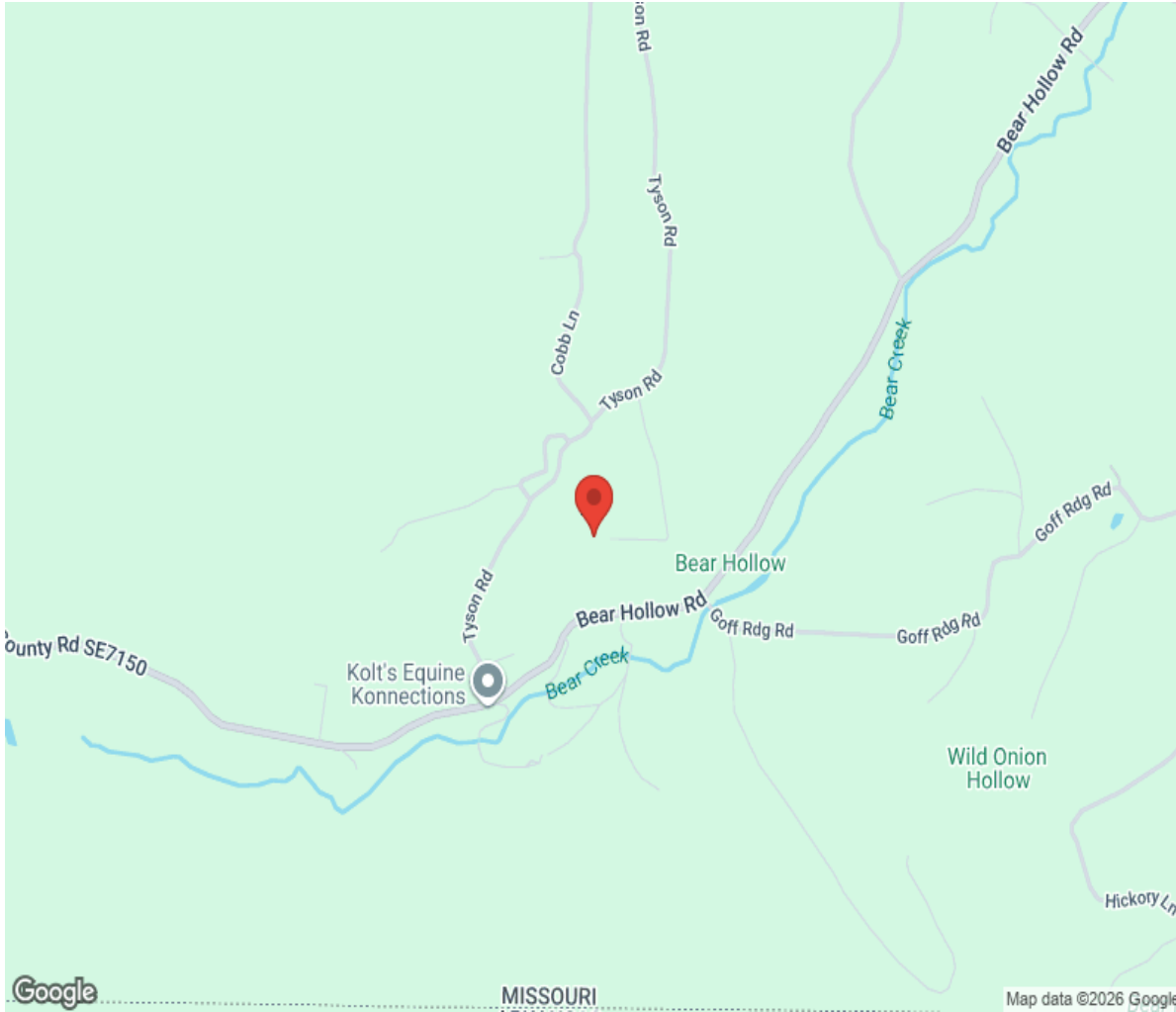








Location



Hamptons

INTERNATIONAL

+44 (0)20 8618 4551

international@hamptons.co.uk

www.hamptons-international.com